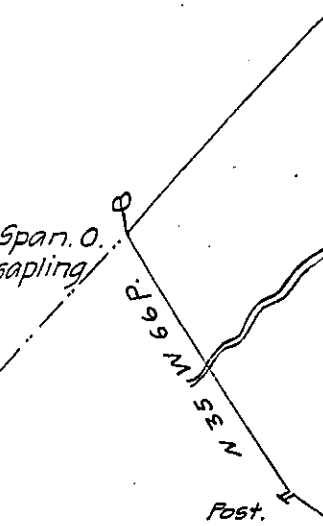


Martin



York County
 Israel Morris
 211/4 a. & allowance

Returned & ca. 19th Augt 1772.

Notand. A Draught for the above was returned into the Surveyor Genl's Office, on the 25 March 1757, but not now to be found, therefore now drawn again on the 22 June 1771.
 P. D. Schultze

Gerber
 in the C
 sylvan
 perches
 Roads.
 Two Wa
 The one
 1747. a
 the 27th
 the 13.

IN TESTIM